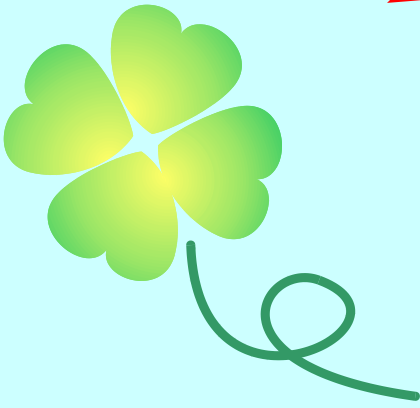


New product

Eco-friendly rubber cable cables from Mitsubishi



EM-2PPCT/F

*Type 2 EP rubber is environmentally friendly
Fire-resistant ethylene rubber cable*

600V

Eco-friendly 2PNCT.

RoHS2 compliant.



MITSUBOSHI CO.,LTD

600V EM-2PPCT/F

*Type 2 EP rubber is environmentally friendly,
Fire-resistant ethylene rubber cable*

Features

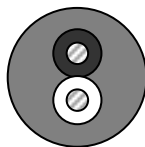
- ① It is non-halogen and does not produce dioxin or toxic gases during incineration.
- ② Does not contain heavy metals (lead, chromium, cadmium, etc.)
- ③ Both insulation and sheathing have flame and low smoke resistance.
- ④ It also has oil and wear resistance.
- ⑤ Maximum allowable temperature 80° C

Dimension table

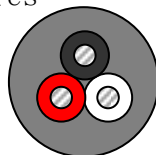
| Size mm ² | Conductor | Core | | 2 cores | | 3 cores | | 4 cores | |
|-------------------------|------------------------|------------------|------------------------|-------------------------|-----------------|------------------------|-----------------|------------------------|-----------------|
| | Outsize diameter mm | Insulation mm | Outsize diameter mm | Finish outsize diameter | Weight kg/km | Outsize diameter mm | Weight kg/km | Outsize diameter mm | Weight kg/km |
| 0.75 | 1.1 | 0.8 | 2.8 | 9.0 | 100 | 9.4 | 115 | 10.4 | 140 |
| 1.25 | 1.5 | 0.8 | 3.2 | 9.8 | 125 | 10.5 | 145 | 11.3 | 175 |
| 2.0 | 1.8 | 0.8 | 3.5 | 10.6 | 150 | 11.1 | 175 | 12.2 | 215 |
| 3.5 | 2.5 | 0.8 | 4.2 | 12.2 | 215 | 12.9 | 260 | 14.1 | 320 |
| 5.5 | 3.1 | 1.0 | 5.2 | 14.4 | 305 | 15.2 | 370 | 16.8 | 465 |
| 8.0 | 3.7 | 1.0 | 5.8 | 15.8 | 385 | 16.7 | 470 | 18.4 | 590 |
| 14 | 4.9 | 1.0 | 7.0 | 18.4 | 570 | 19.7 | 720 | 21.7 | 910 |

Construction • Description

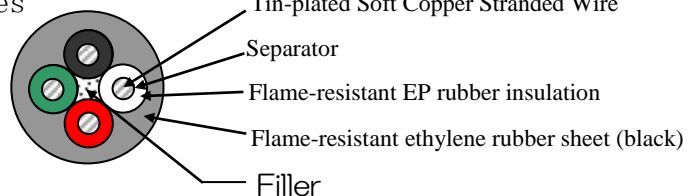
2 cores



3 cores



4 cores



<Note> This cable is not suitable for applications where it is constantly bent or twisted.
In that case, please order our Star-Mic cable series according to various usages.

Office Information

If you have any questions or requests, please contact us.



MITSUBOSHI CO.,LTD Electric Wire Division

Osaka Branch TEL 06-6261-8884(代) FAX 06-6261-5550

Tokyo Branch TEL 03-6897-8660(代) FAX 03-6897-8665

Kyushu Sales Office TEL 092-526-2615(代) FAX 092-526-2781

Nagoya Sales Office TEL 052-760-4636(代) FAX 052-760-4637

Shiga Factory TEL 0748-86-6104(代) FAX 0748-86-2103

URL : <http://www.kk-mitsuboshi.co.jp/>